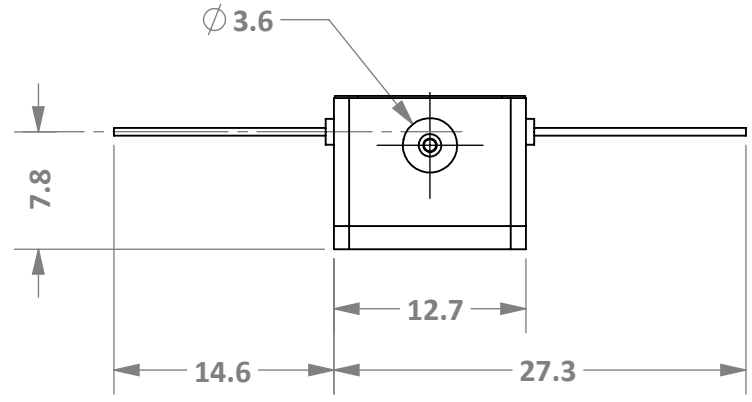
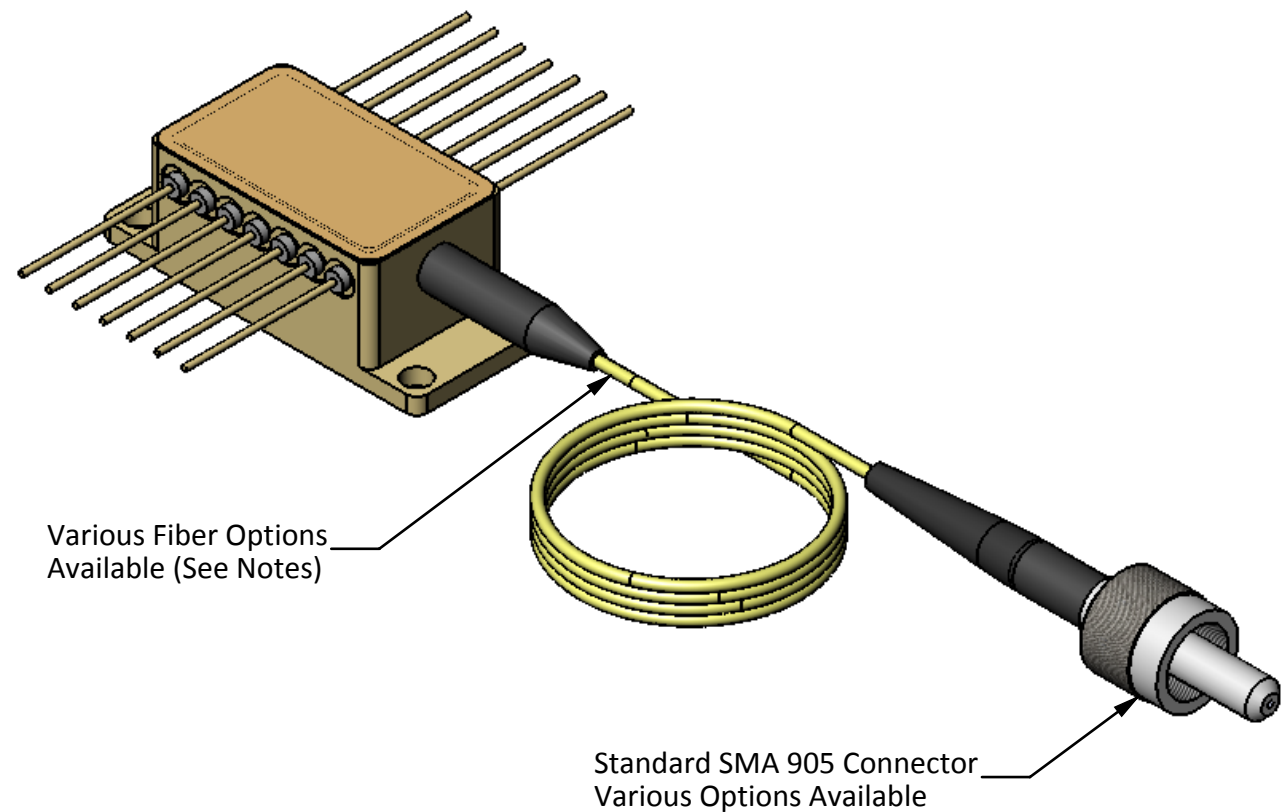
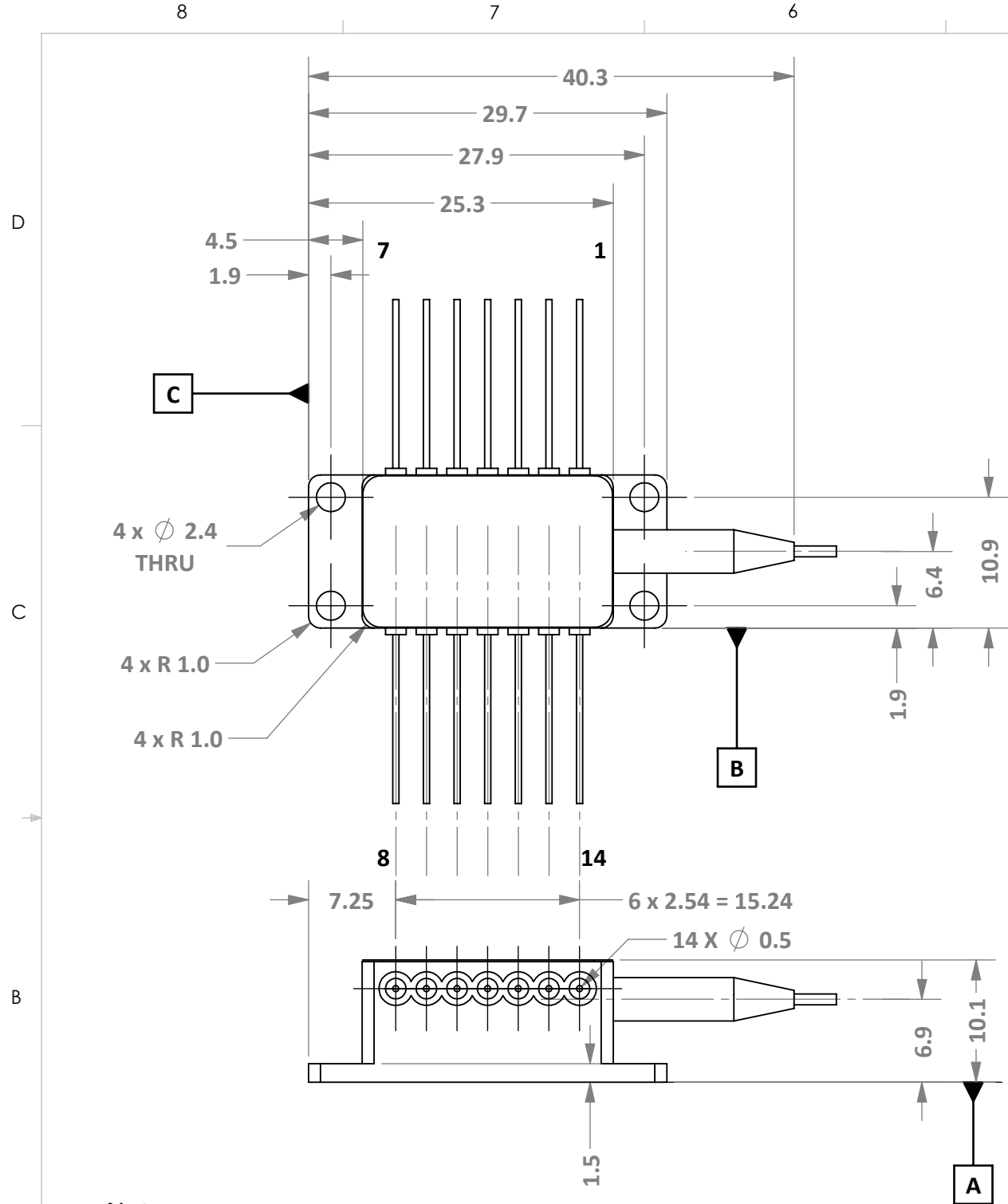


REVISIONS			
REV.	DESCRIPTION	DATE	APPROVED
1	INITIAL RELEASE	7/31/2015	GAP
A	ECN RELEASE	8/12/2015	GAP



ELECTRICAL PIN-OUT			
PIN	CONNECTION	PIN	CONNECTION
1	TEC (+)	8	-
2	THERMISTOR	9	-
3	PD ANODE (+)	10	LASER ANODE (+)
4	PD CATHODE (-)	11	LASER CATHODE (-)
5	THERMISTOR	12	-
6	-	13	-
7	-	14	TEC (-)

**Notes:**

- Mechanical Reference only. See configurator for "B4" part numbers. Dimensions are reference only.
- The use of a thermal pad between the package base and heat sink is required. Size the heatsink for the device's **operational limit** (see spec sheet).
- Standard build includes 1 meter fiber and FC or SMA 905 connector. Various fiber, cable protection, and connector options are available.
- A TEC-controller is **required** for normal operation or severe damage can occur that will destroy the device.
- Package is hermetically sealed.
- Connector pins are plated gold over nickel. Solder at 250° C for 5s is recommended.

**DIMENSIONS** mm [in]  
**UNLESS OTHERWISE SPECIFIED TOLERANCES ARE:**  
 ANGULAR: ± 30 MINUTES  
 X ± .25 [.010]  
 X.X ± .13 [.005]  
 X.XX ± .05 [.002]  
 X.XXX ± .025 [.001]

CONTACT **SHEAUMANN LASER, INC.** FOR DIMENSIONS AND FEATURES NOT SHOWN. ALL INFORMATION ON THIS DRAWING SUBJECT TO CHANGE WITHOUT NOTICE.

DO NOT SCALE DRAWING

**PROPRIETARY AND CONFIDENTIAL**

THE INFORMATION CONTAINED IN THIS DRAWING IS THE SOLE PROPERTY OF **SHEAUMANN LASER, INC.** ANY REPRODUCTION IN PART OR AS A WHOLE WITHOUT THE WRITTEN PERMISSION OF **SHEAUMANN LASER, INC.** IS PROHIBITED.

**INTERPRET GEOMETRIC TOLERANCING PER: ASME Y14.5M-1994**

**THIRD ANGLE PROJECTION**

**SHEAUMANN**

TITLE: **B4**

SIZE <b>B</b>	DWG. NO. <b>RDW 840004</b>	REV <b>A</b>
SCALE: 2:1		SHEET 1 OF 1